

PROJECT
M
LEATHER
FABRIC
WOOD



PREMIUM LAMINATES BY
Super Hylam[®]
Driven by Quality



STONE PLASTIC CERAMIC

These laminates balance authentic visual cues.

From stone-textured realism to ceramic gloss and plastic-inspired finishes, these laminates provide a broad palette to create elegant, room-defining surfaces.

L E A T H E R

F A B R I C

W O O D

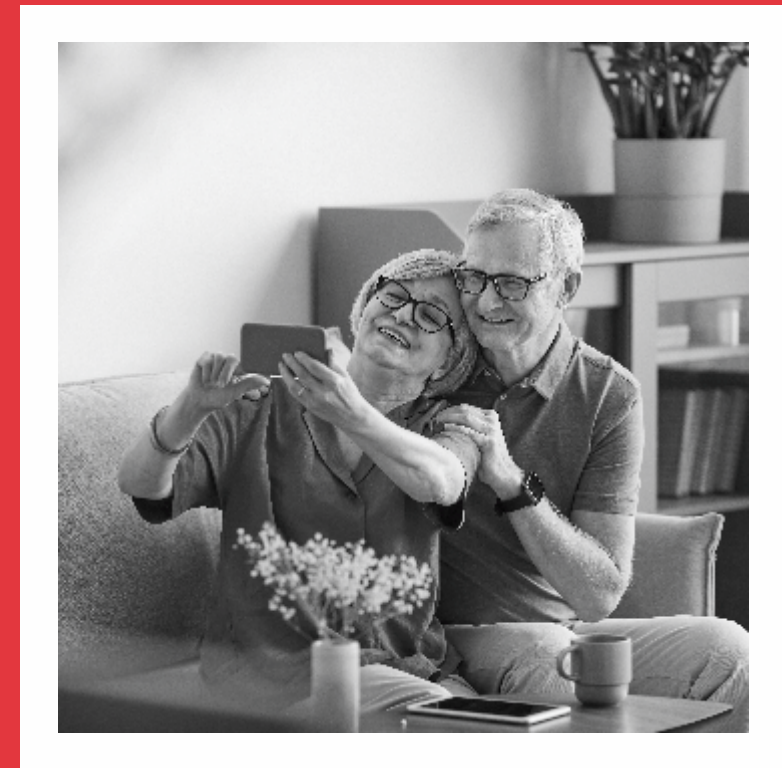
PROJECT
M
LEATHER
FABRIC
WOOD



PROJECT
M
LEATHER
FABRIC
WOOD



Versatile
texture
mode



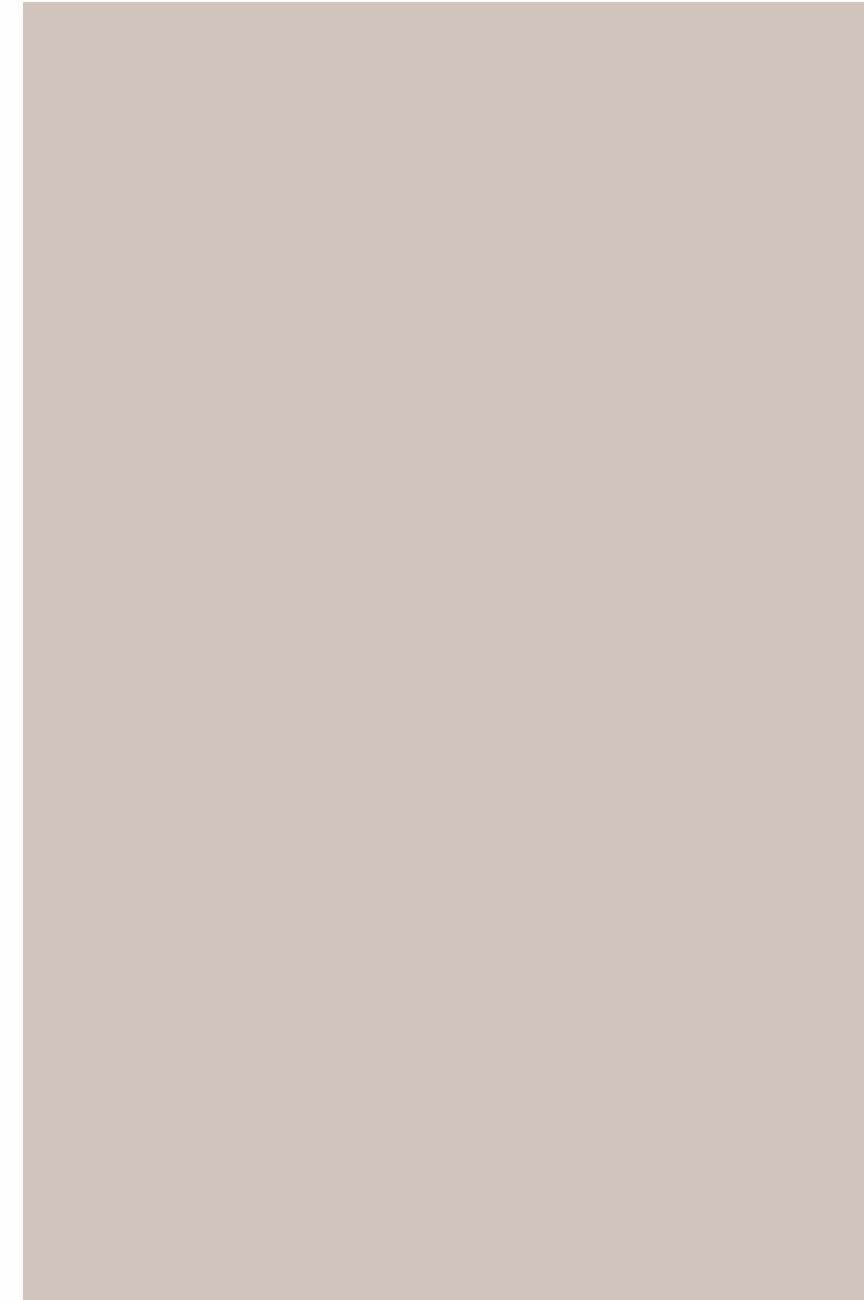
Make every space
an example of
grace and glamour
with finishes of
fascinating
charm.



LEATHER

Smart
& subtle
designs

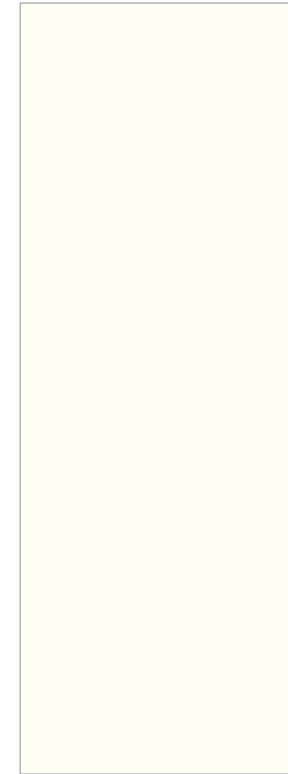
Warm tones and
gentle lines create a cozy,
refined atmosphere.



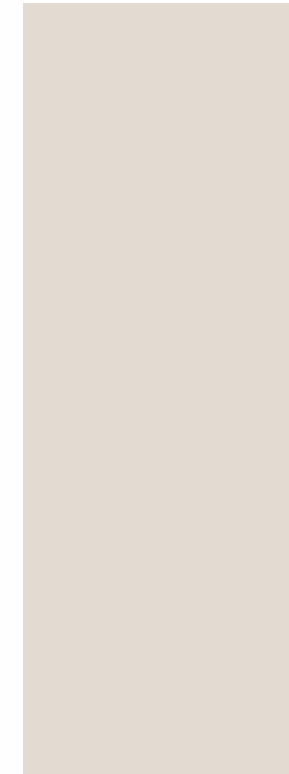


LEATHER

PROJECT M × S3



1002 LT
IVORY WHISPER



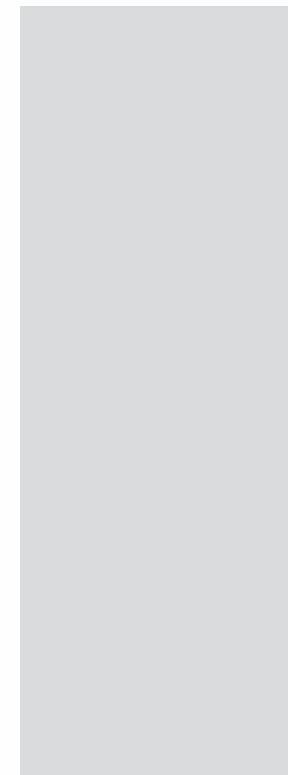
1421 LT
SANDSTONE DAWN



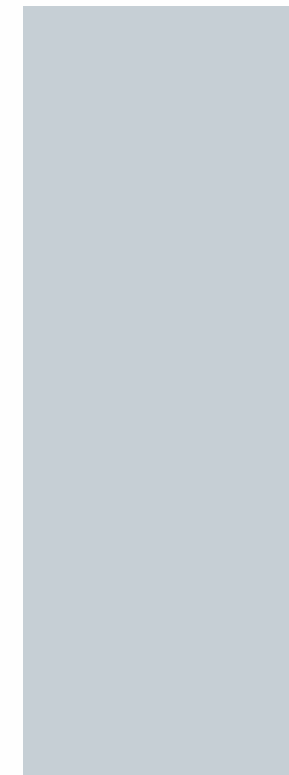
1422 LT
DRIFTWOOD MIST



1423 LT
TRUFFLE SHADOW



1424 LT
STORMY SLATE



1425 LT
HARBOR FOG



1426 LT
CHARCOAL EMBER

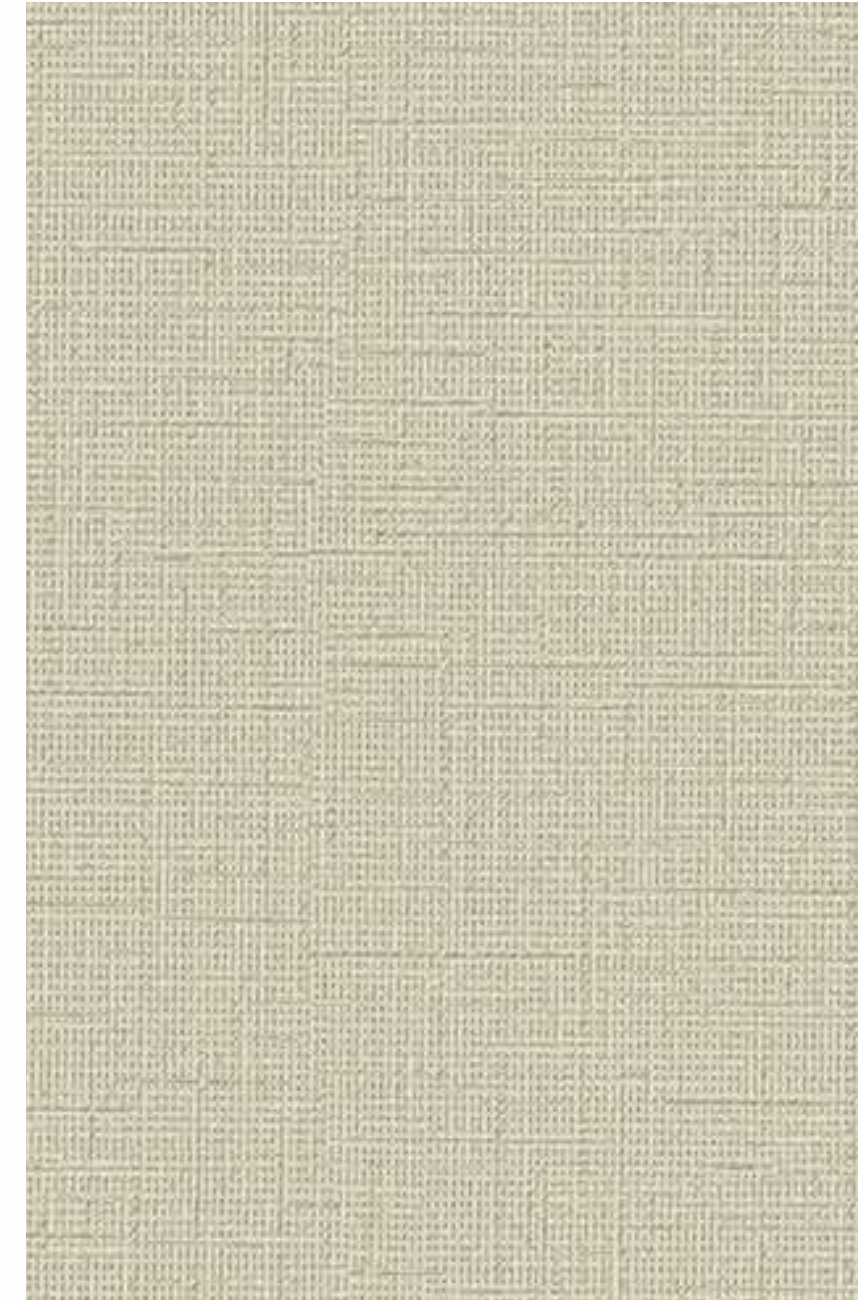


1427 LT
MIDNIGHT ONYX

FABRIC

Lavish
modern
flair

Subtle light play
adds quiet
sophistication
to daily spaces.





F A B R I C



1417 TXT
LAWN FAB



1411 TXT
DUTCH LINEN



1414 TXT
CROSS FAB



1412 TXT
CAMBRIC FAB

Charisma
that
entices

Rich textures evoke
timeless beauty in
ordinary rooms.



F A B R I C



1416 TXT
DUSK FAB



1419 TXT
BLENDE FAB



1418 TXT
WOVEN FAB



1415 TXT
GRID FAB



1413 TXT
TWIST FAB



1420 TXT
TERA FAB

creating
new
image

Subtle, plush-feel finesse
softens edges and
invites relaxed style.

WOOD





W O O D



1409 WD
ELM WOOD



1408 WD
OXFORD MIGHT WOOD



1410 WD
RED ELM WOOD



1407 WD
MIGHT WOOD

Feel an
exquisite
edge

Classic hints
of grandeur appear
without overwhelming
the senses.



W O O D



1401 WD
ROSSEATE OAK



1402WD
NOVA OAK



1403 WD
GELATO OAK



1404 WD
PREMBA PINE



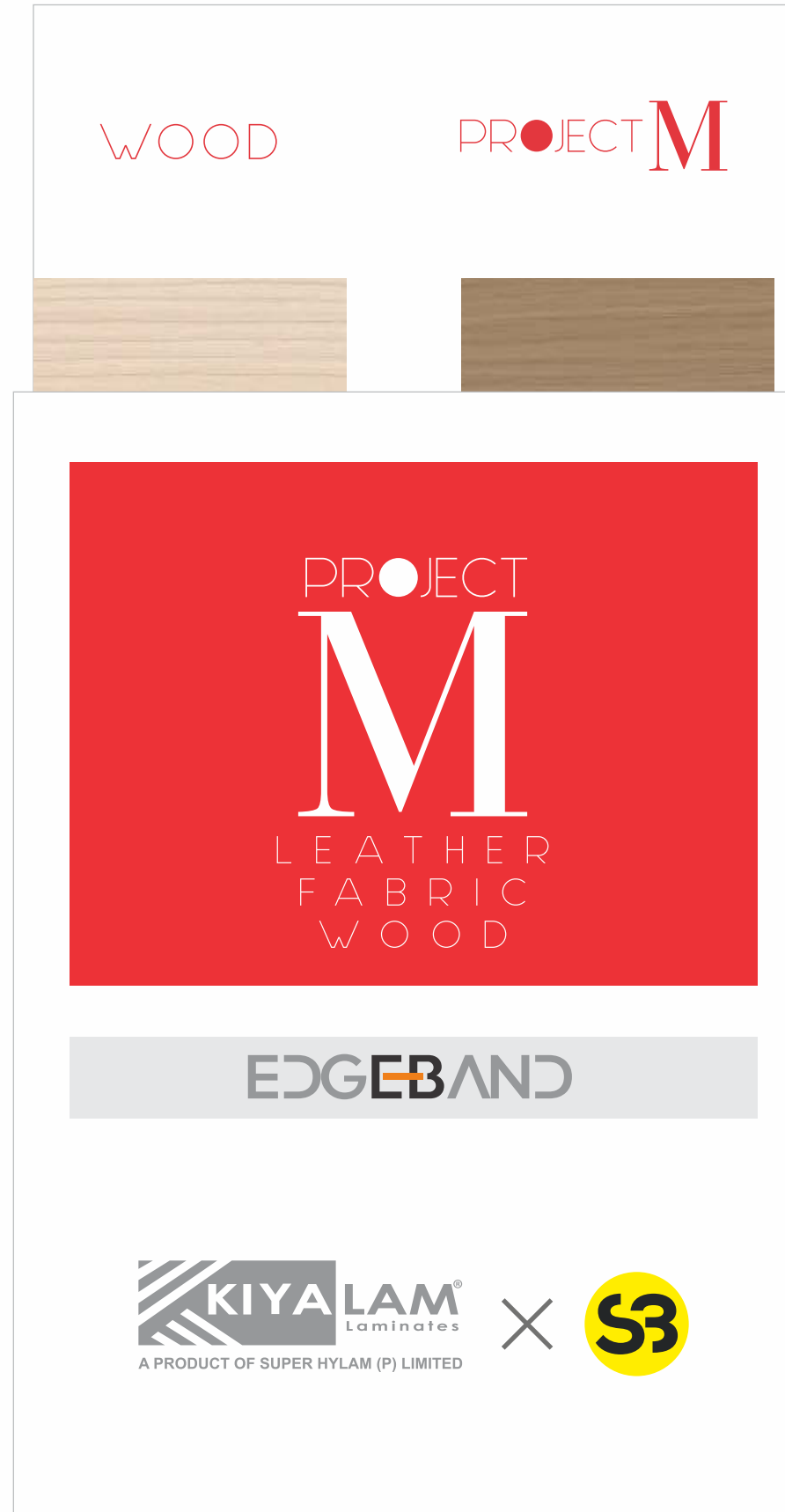
1405 WD
PRECOT WALNUT



1406 WD
PANAMA OAK

Index

SR NO.	CODE	FINISH	PRODUCT NAME	PG NO.
1	1002	LT	IVORY WHISPER	7
2	1421	LT	SANDSTONE DAWN	7
3	1422	LT	DRIFTWOOD MIST	7
4	1423	LT	TRUFFLE SHADOW	7
5	1424	LT	STORMY SLATE	7
6	1425	LT	HARBOR FOG	7
7	1426	LT	CHARCOAL EMBER	7
8	1427	LT	MIDNIGHT ONYX	7
9	1417	TXT	LAWN FAB	11
10	1411	TXT	DUTCH LINEN	11
11	1414	TXT	CROSS FAB	11
12	1412	TXT	CAMBRIC FAB	11
13	1416	TXT	DUSK FAB	13
14	1419	TXT	BLENDE FAB	13
15	1418	TXT	WOVEN FAB	13
16	1415	TXT	GRID FAB	13
17	1413	TXT	TWIST FAB	13
18	1420	TXT	TERA FAB	13
19	1409	WD	ELM WOOD	17
20	1408	WD	OXFORD MIGHT WOOD	17
21	1410	WD	RED ELM WOOD	17
22	1407	WD	MIGHT WOOD	17
23	1401	WD	ROSSEATE OAK	19
24	1402	WD	NOVA OAK	19
25	1403	WD	GELATO OAK	19
26	1404	WD	PREMBA PINE	19
27	1405	WD	PRECOT WALNUT	19
28	1406	WD	PANAMA OAK	19



Technical Specification

Sl. No.	Performance Characteristic	Unit	Requirement as per IS 2046:1995 VGS	KIYALAM Conforms
1	Appearance & Surface Defects	Surface free from spots, dirt, hair & edge defects		
	Dimensional Properties			
	Length	mm	2440 +10, -Nil	Conforms
	Width	mm	1220 +10, -Nil	Conforms
2	Thickness	mm	Max. variation ± 0.10	Conforms
	Flatness	Warp, mm	120 max	Conforms
	Straightness Of Edges	mm/meter straight edge	1.5 mm max	Conforms
	Squareness	mm/meter straight edge	1.5 mm max	Conforms
3	Resistance Of Surface Wear	Rev.	150 (min)	Conforms
	Resistance To Immersion In Boiling Water	% increase by thickness	14.0 max	Conforms
		% increase by weight	12.0 max	Conforms
		Appearance	Not worse than Grade-4	Conforms
5	Resistance To Staining	Group 1 & 2	Not worse than Grade-5	Conforms
		Group 3 & 4	Not worse than Grade-4	Conforms
6	Resistance To Dry Heat @ 180°c	Appearance, Prime Gloss	Not worse than Grade-3	Conforms
		Appearance, Others	Not worse than Grade-4	Conforms
7	Resistance To Color Change In Xenon Arc Light	Grade	Not worse than 6	Conforms
	Dimensional Stability At Deviated Temperatures :			
8	Machine Direction	%	0.65 max	Conforms
	Cross Machine Direction	%	1.12 max	Conforms
9	Resistance To Scratching	N	1.75 max	Conforms
10	Resistance To Steam	Grade	Not worse than Grade-4	Conforms
11	Resistance To Cracking	Grade	Not worse than Grade-4	Conforms
12	Resistance To Impact Small Ball	N	20 min	Conforms

This product technical sheets gives technical relevant to the performance of the product as tested by the company. Company reserves the right to change Product composition & characteristics at any time.

Product Specifications

Product: Paper Based Decorative Laminate Sheets

Size: 2440 x 1220 mm

Thickness: 0.8 mm (+ 0.1 mm)

Finish: Gloss, SF and World Class Textures

Care & Maintenance : Cleaning should be carried out with a soft moist cloth & warm soap solution. Do not use detergents containing abrasive particle or excess soda.

Highlight:

- Design made from genuine imported base paper.
- Manufactured using best quality kraft paper.
- Use of best chemical raw materials for better flexibility & durability.

Disclaimer: Customers are advised to reconfirm selected laminate when placing orders as our liability does not include claims arising from sample chip pasting error. Samples presented are indicative of color, pattern and surface finish but not of actual thicknesses. All metallic patterns series recommended for vertical application only. All products from Super Hylam Private Limited are free from manufacturing defects and fit for use under normal conditions, however the product will normally deviate from manufacturing related specification. Limited warranty shall be limited only to the original buyer. It is recommended that the products must be inspected prior to installation and our liability will be limited to the extent of the cost of the products only. Our products are used for various applications without the possibility of control over the manufacturing of the finished products. The company does not assume obligations or liabilities arising from the furnishing, sale, installation or repair, use or subsequent sale of any product, to any person or entity. Company shall not be liable for any damages due to loading and unloading of sheets or any broken corner or any damages during transit of goods. No claim will be entertained for any problem in the substrate used. Bonding of laminate under high humidity, plywood with high moisture content, plywood with uneven surface, inferior quality adhesive and insufficient pressure may lead to delamination or air bubble between laminate and substrate. Company will not entertain such damages or liabilities. Do not use nail and hammer while cutting corner, Grew, Angle, and designs. Use only drill while cutting such Corner, Grew, Angle and designs.

- Note:-
- No Complaint Will Be Entertain For Air Bubble Or Any Other Problem Due To Pasting Error Or Inferior Quality Adesive Used.
 - No Complaint Will Be Entertain For Mica Cracking.
 - Cutting a laminate sheet at an angle 90 degree leads to development of cracks in corner after pasting. Therefore It Is Advisable to avoid cutting at an angle of 90 degrees.

HGP
HIGH GLOSS PREMIUM

PR
EXTRA PREMIUM

SF
SUEDE FINISH

HD
DIGITAL DESIGNS

